

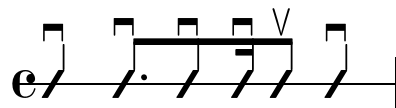
Je te suivrai...

DAVID ALEXANDRE SPORN - 23 OCTOBRE 2005

110 bpm

Diagramme des accords

Motif rythmique :



A



Am



B⁷



C



D



D^{sus4}



Em

Partition

Em D A Am Em D A Am

Voice + Chords

Bass

ClosedHiHat

Snare

BassDrum

9

Em Em C D^{sus4} D

Je suis ren - tré très fa - ti - gué, En - core une fois j'ai vrai - ment trop tra - vail - lé.

7 7 7 7 7 7 7 7 3 3 3 3 3 3 5 5 5 5 5 5

13

Em Em C D^{sus4} D

Un p'tit dî - ner d'avant ma té - lé, Dé -jà mi - nuit il faut que j'aïlle me cou - cher.

7 7 7 7 7 7 7 7 3 3 3 3 3 3 5 5 5 5 5 5

17

C D Em Em

Mon es - prit glisse dans les bras de Mor-phée, Et j'ou-blie l'u - ni-vers, je me lais - se dé - ri - ver.

Detailed description: This block contains the musical notation for measures 17 through 20. The top staff is the vocal line in treble clef with a key signature of two sharps (F# and C#). The lyrics are: "Mon es - prit glisse dans les bras de Mor-phée, Et j'ou-blie l'u - ni-vers, je me lais - se dé - ri - ver." Above the vocal line, the chords C, D, Em, and Em are indicated. The second staff is the bass line in bass clef, also with two sharps. It features guitar fret numbers: 3, 3, 3, 3, 3, 3, 5, 5, 5, 5, 5, 5, 7, 7, 7, 7, 7, 7, 7, 7, 7, 7. The third and fourth staves show the piano accompaniment, with chords and arpeggiated patterns.

21

C D A B⁷

Oh, don't you know _____ That I want to be with you ? Je te

Detailed description: This block contains the musical notation for measures 21 through 24. The top staff is the vocal line in treble clef with a key signature of two sharps. The lyrics are: "Oh, don't you know _____ That I want to be with you ? Je te". Above the vocal line, the chords C, D, A, and B⁷ are indicated. The second staff is the bass line in bass clef, also with two sharps. It features guitar fret numbers: 3, 3, 3, 3, 3, 3, 5, 5, 5, 5, 5, 5, 0, 0, 0, 0, 0, 0, 2, 2, 2, 2, 2, 2. The third and fourth staves show the piano accompaniment, with chords and arpeggiated patterns.

25

Em D A Am

sui - vrai, jusqu' au bout de mes rêves, Je te cher - che-rai, je te trou - ve-rai, Je te

7 7 7 7 7 7 5 5 5 5 5 5 4 4 4 4 4 4 3 3 3 3 3 3

29

Em D A Am

sui - vrai, jusqu' au bord de l'é-veil, Je te cher - che-rai, je te trou - ve-rai, Je te

7 7 7 7 7 7 5 5 5 5 5 5 4 4 4 4 4 4 3 3 3 3 3 3

33

Em D^{sus4} D A Am

sui - vrai, sans dé - cla-rer de trêves, Je te cher - che-rai, je te trou - ve-rai, Je te

7 7 7 7 7 7 5 5 5 5 5 5 4 4 4 4 4 4 3 3 3 3 3 3

37

Em D^{sus4} D A Am

sui - vrai, aux fron - tières du som-meil, Je te cher - che-rai et je te trou-ve - rai,

7 7 7 7 7 7 5 5 5 5 5 5 4 4 4 4 4 4 3 3 3 3 3 3

41

Em D A Am Em D A Am

7 777 7 7 5 555 5 5 4 444 4 4 3 333 7 777 7 7 5 555 5 5 4 444 4 4 3 333

49

Em Em C D^{sus4} D

Pour-quoi es- tu si loin de moi, Pour-quoi fais- tu comme si je n'e- xi - stais pas ?

7 7 7 7 7 7 7 7 3 3 3 3 3 3 5 5 5 5 5 5

53

Em Em C D^{sus4} D

J'ai tant be - soin de ta dou - ceur, Tu es la seule à a - pai - ser ma dou - leur.

7 7 7 7 7 7 7 7 3 3 3 3 3 3 5 5 5 5 5 5

57

C D Em Em

Dans ce monde o - ni - rique où tu t'es ré - fu - giée, Tu t'é - va - pores lor - sque je vais te tou - cher.

3 3 3 3 3 3 5 5 5 5 5 5 7 7 7 7 7 7 7 7 7 7

61 C D A B⁷

Oh, don't you know _____ That I want to live with you? Je te

3 3 3 3 3 3 5 5 5 5 5 5 0 0 0 0 0 2 2 2 2 2 2

65 Em D A Am

sui - vrai, jusqu' au bout de mes rêves, Je te cher - che-rai, je te trou - ve-rai, Je te

7 7 7 7 7 7 5 5 5 5 5 5 4 4 4 4 4 4 3 3 3 3 3 3

69

Em D A Am

sui - vrai, jusqu' au bord de l'é-veil, Je te cher - che-rai, je te trou - ve-rai, Je te

7 7 7 7 7 7 5 5 5 5 5 5 4 4 4 4 4 4 3 3 3 3 3 3

73

Em D^{sus4} D A Am

sui - vrai, sans dé - cla-rer de trêves, Je te cher - che-rai, je te trou - ve-rai, Je te

7 7 7 7 7 7 5 5 5 5 5 5 4 4 4 4 4 4 3 3 3 3 3 3

77

Em D^{sus4} D A Am

sui - vrai, aux fron - tières du som-meil, Je te cher - che-rai et je te trou-ve - rai,

7 7 7 7 7 7 5 5 5 5 5 5 4 4 4 4 4 4 3 3 3 3 3 3

81

Em D A Am Em D A Am

7 7 7 7 7 7 5 5 5 5 5 5 4 4 4 4 4 4 3 3 3 3 3 3 7 7 7 7 7 7 5 5 5 5 5 5 4 4 4 4 4 4 3 3 3 3 3 3

89

C D Em Em

Nuit a - près nuit je me rap - proche de toi, Quand je t'at - tra - pe-rai tu re-ste - ras a - vec moi.

93

C D A B⁷

Oh, don't you know _____ Life is no - thing with - out you ? Je te

97

Em D A Am

sui - vrai, jusqu' au bout de mes rêves, Je te cher - che-rai, je te trou - ve-rai, Je te

7 7 7 7 7 7 5 5 5 5 5 5 4 4 4 4 4 4 3 3 3 3 3 3

101

Em D A Am

sui - vrai, jusqu' au bord de l'é-veil, Je te cher - che-rai, je te trou - ve-rai, Je te

7 7 7 7 7 7 5 5 5 5 5 5 4 4 4 4 4 4 3 3 3 3 3 3

105

Em D^{sus4} D A Am

sui - vrai, sans dé - cla-rer de trêves, Je te cher - che-rai, je te trou - ve-rai, Je te

9/4

7 7 7 7 7 7 5 5 5 5 5 5 4 4 4 4 4 4 3 3 3 3 3 3

109

Em D^{sus4} D A Am

sui - vrai, aux fron - tières du som-meil, Je te cher - che-rai et je te trou-ve - rai,

9/4

7 7 7 7 7 7 5 5 5 5 5 5 4 4 4 4 4 4 3 3 3 3 3 3

113

Em D A Am Em D A Am

The image shows a musical score for guitar, starting at measure 113. The score is written in treble clef with a key signature of two sharps (F# and C#). The guitar-specific notation includes a bass staff with fret numbers (7, 5, 4, 3) and a guitar staff with rhythmic patterns of eighth notes. The chords are Em, D, A, Am, Em, D, A, and Am. The guitar staff shows a consistent eighth-note pattern across all measures, with some variations in the final measure of each chord.