

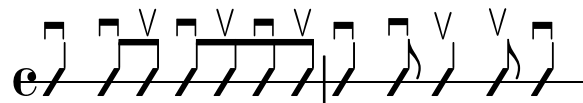
# Four seasons love

DAVID ALEXANDRE SPORN - 12 FÉVRIER 2006

130 bpm

Diagramme des accords

Motif rythmique :



Am



B<sup>7</sup>



C



C<sup>7</sup>



Em



E<sup>7</sup>

Partition

Em B<sup>7</sup>

Voice + Chords

Bass

Bongos

Drums

5 **B<sup>7</sup>** **Em** **Em** **B<sup>7</sup>**

9/4

1 1 1 1 1 1 1 2 2 2 2 2 4 0 2 2 2 2 2 2 2 2 1 1 1 1 1 2 2

9 **B<sup>7</sup>** **Em** **Em** **B<sup>7</sup>**

Ni - ho - n ni tsui - ta - ra, Mo - mi - ji

9/4

1 1 1 1 1 1 1 2 2 2 2 2 4 0 2 2 2 2 2 2 2 2 1 1 1 1 1 2 2

13

B<sup>7</sup> Em Em B<sup>7</sup>

ga mos - su - gu ki - ta Ki - mi ni de - at - - te, Ko - ko - ro -

The musical score for measures 13-16 consists of four staves. The top staff is the vocal line in treble clef with a key signature of two sharps (F# and C#). The lyrics are: "ga mos - su - gu ki - ta Ki - mi ni de - at - - te, Ko - ko - ro -". The second staff is the bass line in bass clef. The third staff is the guitar line, showing fret numbers: 1 1 1 1 1 1 1 for the first measure, 2 2 2 2 2 4 0 for the second, 2 2 2 2 2 2 2 for the third, and 1 1 1 1 1 2 2 for the fourth. The bottom staff is the drum line, featuring a consistent hi-hat pattern of eighth notes with '+' symbols above them.

17

B<sup>7</sup> Em Em B<sup>7</sup>

ga to - bi ko - n - da. Yu - ki ga fut - ta - ra, So - to

The musical score for measures 17-20 consists of four staves. The top staff is the vocal line in treble clef with a key signature of two sharps (F# and C#). The lyrics are: "ga to - bi ko - n - da. Yu - ki ga fut - ta - ra, So - to". The second staff is the bass line in bass clef. The third staff is the guitar line, showing fret numbers: 1 1 1 1 1 1 1 for the first measure, 2 2 2 2 2 4 0 for the second, 2 2 2 2 2 2 2 for the third, and 1 1 1 1 1 2 2 for the fourth. The bottom staff is the drum line, featuring a consistent hi-hat pattern of eighth notes with '+' symbols above them.

21

B<sup>7</sup> Em Em B<sup>7</sup>

ga sa - mu - ku ni na - ru Ke - re - do ki - mi no so - ba ni

1 1 1 1 1 1 1 2 2 2 2 2 4 0 2 2 2 2 2 2 2 1 1 1 1 1 2 2

25

B<sup>7</sup> Em Em C Am

ha i - tsu - mo a - ta - ta - kai. Ki - mi wo ko - i shi - te -

1 1 1 1 1 1 1 2 2 2 2 2 4 0 2 3 3 3 3 3 3 3 0 0 0 0 0 0

30

Em Em B<sup>7</sup> B<sup>7</sup>

ru, Fran-ce ni ka - e - te ha sa - mi-shi su - gi -

34

Em E<sup>7</sup> C<sup>7</sup> Am

ru Ki - mi wo a - i shi-te -

38

Em Em B<sup>7</sup> B<sup>7</sup>

ru, Ki - mi no so - ba ni i - ta -

2 2 2 2 2 4 0 2 2 2 2 2 2 2 1 1 1 1 1 2 2 1 1 1 1 1 1

42

Em Em Em B<sup>7</sup>

i Sa - ku - ra ga sai - ta - ra, Ko - to - ri

2 2 2 2 2 4 0 2 2 2 2 2 2 2 1 1 1 1 1 2 2

46 B<sup>7</sup> Em Em B<sup>7</sup>

ga u - tat - te i - ru Ki - mi to tsu - ki - at - te, Ko - ko - ro

1 1 1 1 1 1 1 2 2 2 2 2 4 0 2 2 2 2 2 2 2 1 1 1 1 1 2 2

50 B<sup>7</sup> Em Em B<sup>7</sup>

ga shi - a - wa - se ni nat - ta Tsu - yu ga ki - ta - ra, Mos - su -

1 1 1 1 1 1 1 2 2 2 2 2 4 0 2 2 2 2 2 2 2 1 1 1 1 1 2 2

54

B<sup>7</sup> Em Em B<sup>7</sup>

gu France ni ka - e - te, Ko - ko - ro no na - ka ni mo, Tsu - yu

58

B<sup>7</sup> Em Em C Am

no ki-se - tsu dat - ta Ki - mi wo ko - i shi-te -



63

Em Em B<sup>7</sup> B<sup>7</sup>

ru, Fran-ce ni ka - e - te ha sa - mi-shi su - gi -

2 2 2 2 2 2 2 2 2 2 1 1 1 1 1 2 2 1 1 1 1 1 1

67

Em E<sup>7</sup> C<sup>7</sup> Am

ru Ki - mi wo a - i shi-te -

2 2 2 2 2 2 2 2 0 0 0 3 3 2 2 0 0 0 0 0 2 3 0 0 0 0 0 2 3

71

Em Em B<sup>7</sup> B<sup>7</sup>

ru, Ki - mi no so - ba ni i - ta -

2 2 2 2 2 4 0 | 2 2 2 2 2 2 2 | 1 1 1 1 1 2 2 | 1 1 1 1 1 1 1

75

Em Em C Am Em

i la la la la la la la

2 2 2 2 2 4 0 | 2 | 3 3 3 3 3 3 | 0 0 0 0 0 0 | 2 2 2 2 2 2 2

80

Em B<sup>7</sup> B<sup>7</sup> Em

la la la la la la la la la la la

2 2 2 2 2 2 1 1 1 1 1 2 2 1 1 1 1 1 1 1 2 2 2 2 2 2

84

E<sup>7</sup> C<sup>7</sup> Am Em

la la la la la la la

0 0 0 3 3 2 2 0 0 0 0 0 2 3 0 0 0 0 0 2 3 2 2 2 2 2 4 0

88

Em B<sup>7</sup> B<sup>7</sup> Em Em

la la la la la la la la

2 2 2 2 2 2 1 1 1 1 1 2 2 1 1 1 1 1 1 1 2 2 2 2 2 2 4 0 2

Detailed description of the musical score: The score is for guitar and voice. It consists of five systems. The first system shows the vocal line with lyrics 'la la la la la la la la' and guitar chords Em, B7, B7, Em, Em. The second system shows the bass line with notes and fret numbers (2, 1, 1, 1, 1, 2, 2, 1, 1, 1, 1, 1, 1, 2, 2, 2, 2, 2, 4, 0, 2). The third system shows the guitar accompaniment with notes and fret numbers. The fourth system shows the guitar accompaniment with notes and fret numbers. The fifth system shows the guitar accompaniment with notes and fret numbers.